

precision+ is a sophisticated project cost management solution that bridges the gap between project planning and management accounting to provide true *project precision*. With the ability to track, analyse and manage both time and expenses on a project-by-project basis, precision+ provides a real-time view of project cost and profitability.

Built upon the Microsoft Dynamics™ CRM 4.0 architecture, precision+ extends the CRM lifecycle from sales & marketing activities and lead generation, through to project delivery and invoicing.



precision+ features an intuitive web-based timesheet application for structured time entry, instantaneous timesheet submission and electronic time approval processes. Additionally, the comprehensive reporting capabilities allow analysis of the productivity and profitability of individuals, projects and customers.

SATDEMO - Tim Timewriter  
Log Out Feedback

Nov-2009

Month View - Week Summary

26-Oct - 01-Nov	02-Nov - 08-Nov	09-Nov - 15-Nov	16-Nov - 22-Nov	23-Nov - 29-Nov
Week Number 44	Week Number 45	Week Number 46	Week Number 47	Week Number 48
Status ●	Status ●	Status ●	Status ●	Status ●
Total Hours 0.00	Total Hours 0.00	Total Hours 0.00	Total Hours 38.75	Total Hours 0.00

Monthly Timesheet

Date	Project Code	Project Name	Work Type	Narrative	Start	End	Break	Hours
Mon 16-Nov	ABCD.001.SWBLD	Online Life Insurance System	Deployment	Deploy v1.0.2 into UAT				2.00
Mon 16-Nov	BLACK.001.IMPLE	CRM Implementation	Implementation	CRM configuration	10:00	13:00		3.00
Mon 16-Nov	BLACK.001.IMPLE	CRM Implementation	Implementation	Workflow creation	14:00	17:15		3.25
Tue 17-Nov	BLACK.001.IMPLE	CRM Implementation	Implementation	CRM customisation and workflow	09:00	18:00	1.00	8.00
Wed 18-Nov	BLUES.001.IMPLE	CRM Implementation	Requirements Analysis	Requirements workshops				6.00
Wed 18-Nov	BLACK.001.IMPLE	CRM Implementation	Implementation	Config change requests 101 and 106	17:00	19:00		2.00
Thu 19-Nov	BLUES.001.IMPLE	CRM Implementation	Requirements Analysis	Client workshops & resulting analysis				7.00
Thu 19-Nov	SATUK.002.INTNL	SAT Internal Tasks	Administration	Timesheets & PRA paperwork				1.00
Fri 20-Nov	ABCD.001.SWBLD	Online Life Insurance System	Meetings	Weekly Project Meeting				1.00
Fri 20-Nov	BLUES.001.IMPLE	CRM Implementation	Requirements Analysis	Client workshops				5.50
<b>Total</b>								<b>38.75</b>

Customer Summary

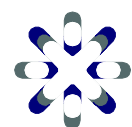
Customer	Hours
ABC Corp	3.00
Bladridge Consulting	16.25
Bluestone Productions Ltd	18.50
Silicon Avenue Technologies (UK) Ltd	1.00
<b>Total</b>	<b>38.75</b>

Preview

With workflows facilitating project administration, resource assignment and resource management, precision+ streamlines business processes and delivers efficiencies across the organisation. The centralised data repository also provides valuable business intelligence for improved management reporting and decision making.

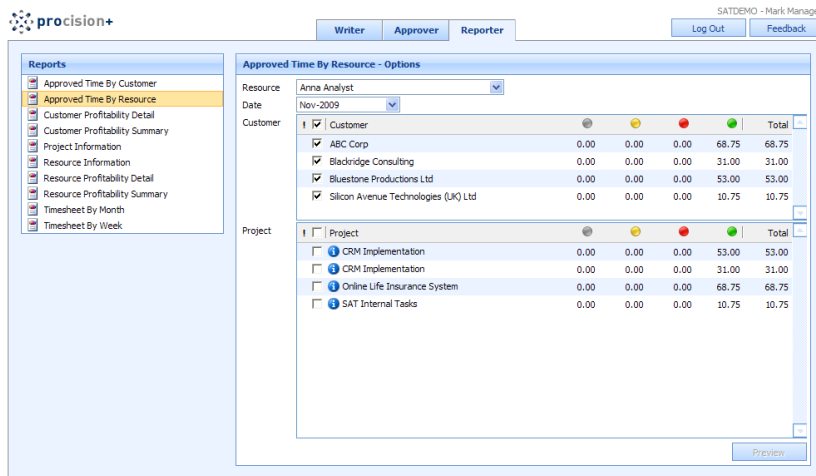
precision+ Features

- ✓ Fully integrated with Microsoft Dynamics™ CRM 4.0
- ✓ Project creation and administration through the use of configurable templates
- ✓ Project resource assignment and management
- ✓ Project time and cost management
- ✓ Web-based timesheet entry
- ✓ Electronic timesheet approval
- ✓ Automated timesheet submission and processing reminders
- ✓ Timesheet, profitability and resource utilisation reporting
- ✓ Multiple contractual pricing methods
- ✓ Automated invoicing functionality
- ✓ Supports multi-currency transactions and multiple time zones
- ✓ Comprehensive data export functionality



silicon avenue

precision+ Benefits



**Improve enterprise-wide decision making** – the delivery of timely, accurate management reports enhances and accelerates business-critical decision making.

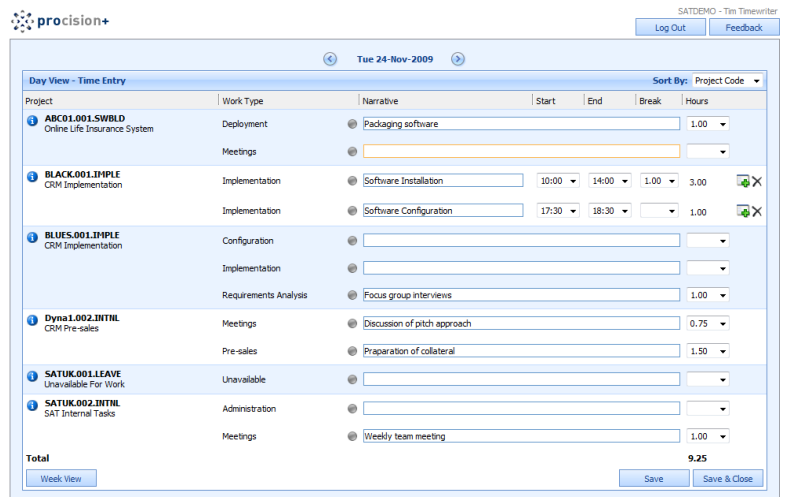
**Reduce costs and increase profitability** – the ability to capture, track and measure actual versus budgeted project costs improves cost management and profitability.

**Centralise core business data** – the data repository encourages the proactive utilisation of core business information, reduces data redundancy and improves information accuracy and control.

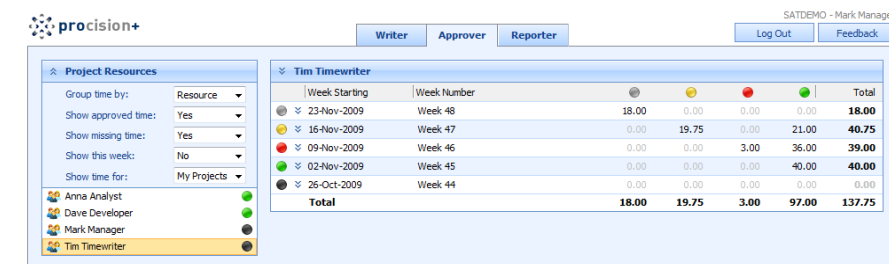
**Improve resource utilisation and productivity** – the detailed analysis of clear, structured timesheet records provides transparency of how time is being spent and highlights areas of inefficiency.

**Streamline accounts receivable processes** – the automated invoicing functionality ensures invoices are more accurate and will reach your customers sooner, thereby facilitating faster payment.

**Detect and prevent fraud** – the SQL database provides historical information for the analysis of time and expense patterns, exposing areas of incongruous, suspicious or fraudulent time recording.



**Reduce administrative overhead** – the structured time entry facility, instantaneous timesheet submission functionality and automated email reminders significantly reduce timesheet processing effort. These features combine to reduce errors and increase efficiency across administrative functions.



**Reduce training costs** – the intuitive web interface is simple and easy to use, minimising user training requirements.

**Fully scalable** – the Microsoft Dynamics™ CRM 4.0 framework upon which precision+ is built, is a globally supported platform with over one million users worldwide. The underlying xRM platform offers the ability to easily customise and extend application functionality to cater for the evolving requirements of any organisation.